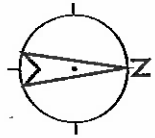
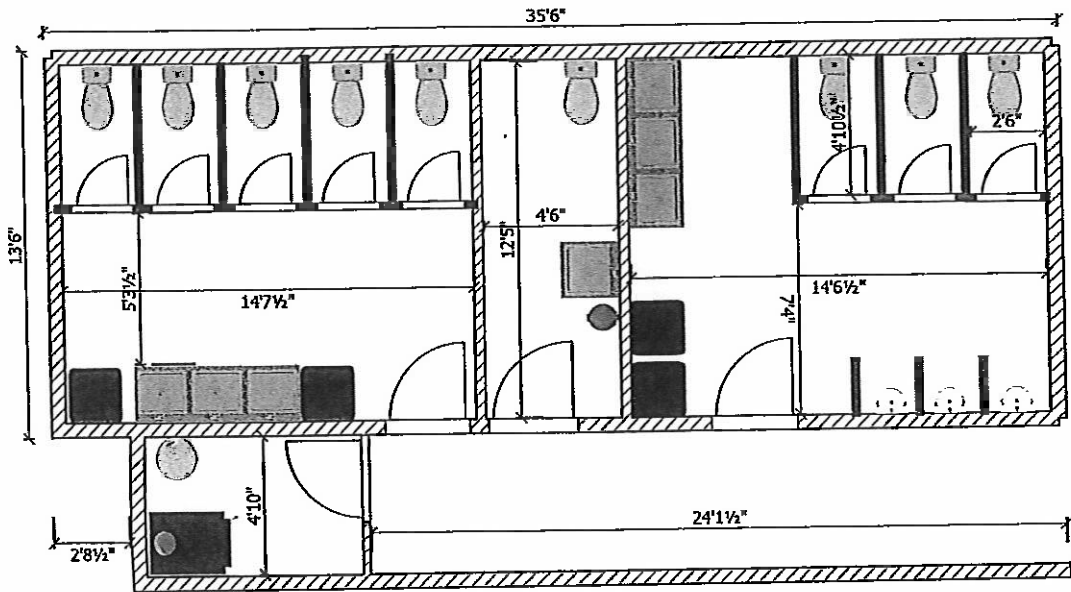


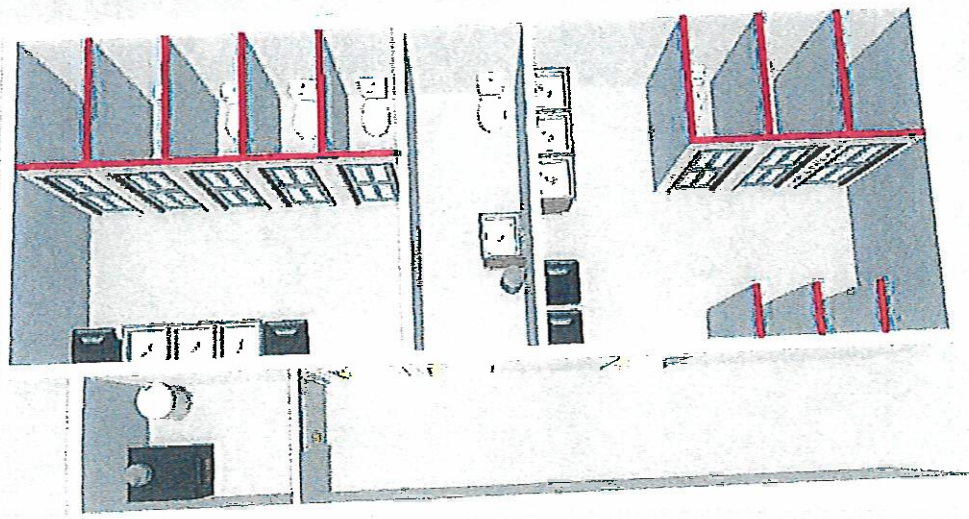
Bathroom addition to Farm Credit of Southern Colorado Show Pavilion

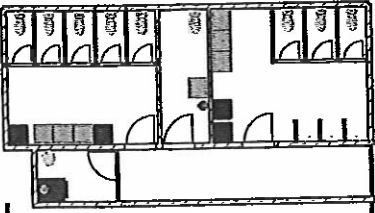
The project is to add a bathroom facility to the show pavilion. Please submit sealed bids to Collin Koop with Kit Carson County for the following work.

- Pour concrete with a footing with a 4" pad and floor drains installed.
- It will have a metal outside with matching colors, wood frame construction and installation throughout the building. The roof will be a single pitch to match the lean-to.
- On the inside it will be lined with plastic waterproof boards.
- Doors, 4 of them 36" metal with self-closing.
- Electrical led 4-foot fixtures 6 in men, 6 in women, and 2 in handy cap bathroom. 3 lights in hall and one in maintenance room.
- Electrical outlets two by each sink area and two in hall.
- Electric hot water heater will be placed in maintenance room so 220 there as well.

- The water will need to be hooked up to the hydrant on the southwest side of the show pavilion and the plumbing needs to be hooked up to the existing plumbing for the 4H bathrooms.
- Measurements on next paper are not exact.
- Heat and ac ducted in the bathroom.
- The County will purchase and install the sinks, toilets/urinals, and stalls.







S

N



Aerial

United States · CO · Kit Carson Co.



30 ft
10 m
© Vertical Image

Feedback