



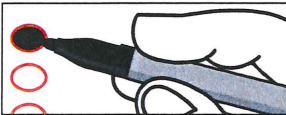
**Official Ballot for Democratic Party
Kit Carson County Primary Election
Tuesday, June 30, 2020**

Ballot Style: DEM

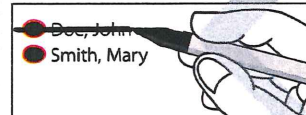
Susan Corliss
Clerk and Recorder

- !** Return only one ballot. If your mail ballot packet contains ballots for both the Democratic and Republican Parties, mark and return only one ballot, and destroy the other. If you mark and return both party ballots, neither will count.
- !** Please vote your mail ballot. Due to COVID-19, help us make this a safe election for everyone by returning this ballot via mail or drop box.

Instructions



To vote for a named candidate, completely fill in the oval to the left of your choice. Use blue or black ink.



To make a correction, draw a bold line through the oval and candidate name marked by mistake. Then, completely fill in the oval next to the correct name.

WARNING: Any person who, by use of force or other means, unduly influences an eligible elector to vote in any particular manner or to refrain from voting, or who falsely makes, alters, forges, or counterfeits any mail ballot before or after it has been cast, or who destroys, defaces, mutilates, or tampers with a ballot is subject, upon conviction, to imprisonment, or to a fine, or both. Section 1-7.5-107(3)(b), C.R.S.

Federal Offices	State Offices	County Offices
United States Senator (Vote for One) <ul style="list-style-type: none"> <input type="radio"/> Andrew Romanoff <input type="radio"/> John W. Hickenlooper 	State Representative - District 65 (Vote for One) <p>There are no candidates for this office.</p>	County Commissioner - District 1 (Vote for One) <p>There are no candidates for this office.</p>
Representative to the 117th United States Congress - District 4 (Vote for One) <ul style="list-style-type: none"> <input type="radio"/> Ike McCorkle 	District Attorney - 13th Judicial District (Vote for One) <p>There are no candidates for this office.</p>	County Commissioner - District 3 (Vote for One) <ul style="list-style-type: none"> <input type="radio"/> Carlin Stratton